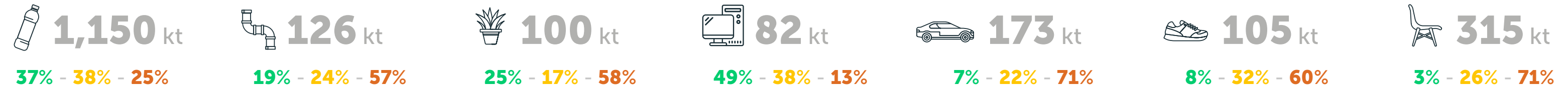
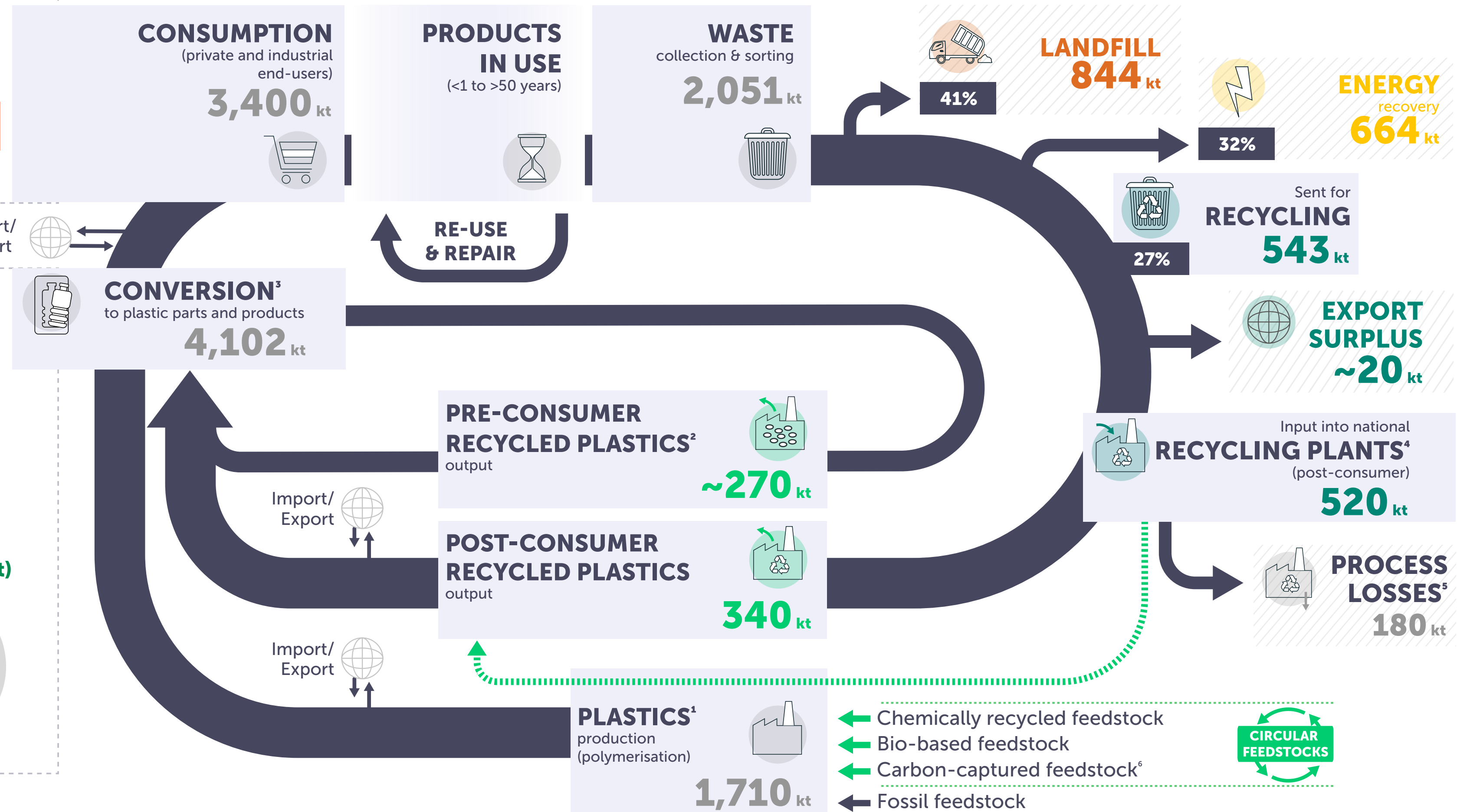
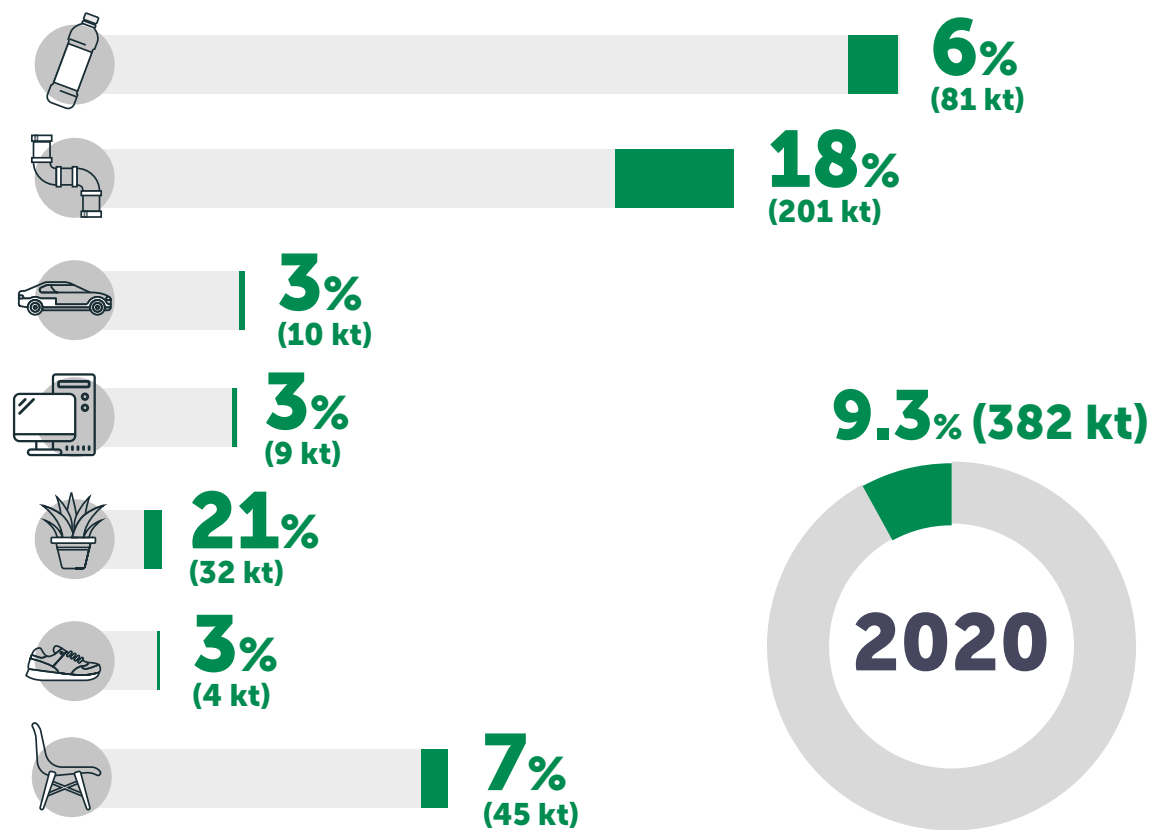


COLLECTION AND TREATMENT OF POST-CONSUMER PLASTIC WASTE



POST-CONSUMER RECYCLED PLASTICS IN MANUFACTURED PRODUCTS



- POST-CONSUMER RECYCLED PLASTICS
- RECYCLING
- ENERGY RECOVERY
- LANDFILL
- 🚚 PACKAGING
- 🏠 BUILDING & CONSTRUCTION
- 🌱 AGRICULTURE
- 📺 ELECTRICAL & ELECTRONIC
- 🚗 AUTOMOTIVE
- 👟 HOUSEWARE, LEISURE, SPORTS
- 🪑 OTHERS

The plastics packaging consumption and waste data used for the beside graph were extrapolated based on 2019 available figures. The beside data were rounded.

- Does not include elastomers, adhesives, coatings and sealants.
- Based on interviews with recyclers. Pre-consumer plastics waste is mainly originating from the plastics conversion and from plastics production (polymerisation) to a lesser extent.
- Comprising 3420 kt from plastics production (polymerisation), 300 kt pre-consumer recycled plastics and 382 kt post-consumer recycled plastics. Compounding of recycled plastics and plastics from polymerization may occur prior conversion.
- Chemical recycling is not yet taking place in Poland.
- Process losses are usually sent to energy recovery or landfill. Parts of plastics residues could be a potential future source of chemical recycling.
- Carbon Capture and Use (e.g. CO₂) is for plastics production is not yet used in Poland.